

B-Dale Club History

In September 1961, a group of men from the County Road B and Dale Street neighborhoods formed an organization to help promote youth activities throughout the Roseville area. They built a warming house and installed lights for the skaters at nearby Alameda Pond. They planted trees, held dances and bought playground equipment for the parks and playgrounds throughout the city. They built a clubhouse for the members and a softball field complete with dugouts, fences and a scoreboard. They promoted sports through the sponsorship of baseball, hockey, softball, football, volleyball, basketball and soccer teams. They built an outdoor shelter, bocce ball and horseshoe courts. They conducted Halloween and Christmas parties for the kids, and social activities for the physically challenged. It is estimated that in these first 42 years, the B-Dale Club had dedicated over 1.2 million dollars to the youth and seniors of Roseville. The odds of success for an organization like the B-Dale Club would seem slim indeed. It has no affiliation with a larger group. So its membership dues, fundraising events and the rental of its facilities are its only means of support. It is truly a non-profit organization, with money it earns directed toward charitable causes. It works because of its members, men and women alike, who believe in its humanitarian philosophy, and donate their time and talents to make sure it works.

2100 North Dale Street
Roseville, Minnesota 55113-6461
651-489-5386
www.b-dale.com

2100 North Dale Street
Roseville, MN 55113-6461



**A Place for Family,
A Place for Friends,
A Place for Fun!**

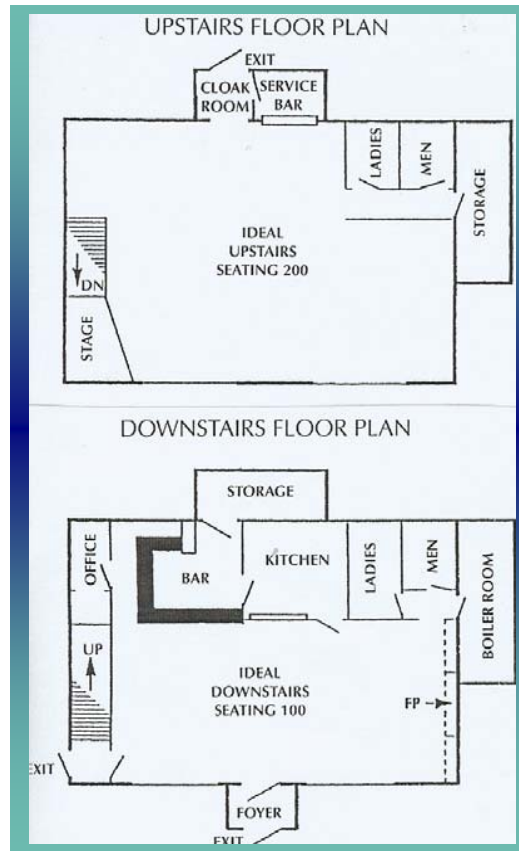


2100 North Dale Street
Roseville, Minnesota 55113-6461
651-489-5386
www.b-dale.com

The B-Dale Club is an ideal venue for weddings, showers, birthdays, corporate events, meetings, company picnics, family reunions, holiday parties, sporting events as well as memorial services.

The B-Dale Club can offer your event to following:

- 4800 square feet of rental space
- Full bar service and keg beer
- Newly refurbished banquet area
- Hardwood dance floor with upstairs service bar and stage
- Exclusive catering services provided by Aesop's Table
- Large lighted parking lot/Off street parking
- Outdoor picnic shelter with electricity
- Adjacent to Villa Park for hiking and nature studies
- Softball field, horseshoes, bocce ball, playground
- Large charcoal grill
- Pull tabs available*
- B-Dale works with Not-for-profit and Benefit affiliations as well
- Member discounts after 3 years



For additional information and to book your event
Contact
Carol Turnquist
651-489-5386
www.b-dale.com

B-Dale Club Rental Information

Banquet Hall Rental:

Fridays and Saturdays- \$450.
Capacity 200

Entire Building Rental:

Saturday - \$600
Capacity 300

Friday and Saturday rental fees include bartender services for an 8-hour shift, extended hours are available at an additional charge. Monday thru Sunday call for rental prices and details. Prices are subject to change.

Security: (Roseville P.D.) \$150

Security is required with all music and dancing events.

Keg Beer: \$150

Additional cost for specialty brands.

Full Service Bar is Available:

All beverages, alcohol and soft drinks must be purchased through the B-Dale Club.

Exclusive Catering Services offered by Aesop's Table

www.aesopstable.com

